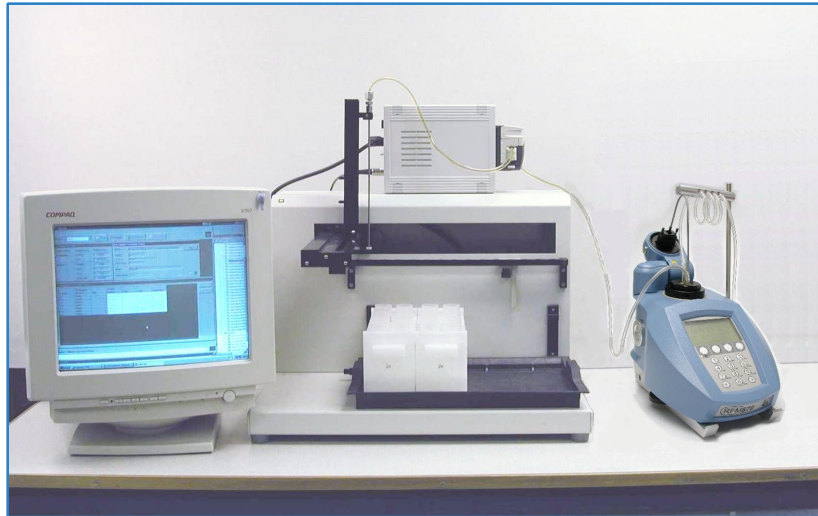


Autosampler Systems



Micro flowcells for digital refractometers facilitate the use of autosampler systems in laboratories that have a high throughput of samples. Polarimeters may also be incorporated in such systems by way of low volume polarimeter tubes, fitted with leur taper connections.

Bellingham + Stanley provide custom designed systems based on a number of standard components that have been carefully selected and in some cases modified, to give optimum performance in relation to use with refractometers. Close co-operation with the client in the design phase ensures that the system is efficient in terms of performance and is cost effective. Typical specifications and order codes are listed below.

Some applications, such as those in the flavours and aromatic oil industry, may require specialist cleaning of instrument measurement cells. In such cases, Bellingham + Stanley may choose to work with a partner that specialises in such systems. Details for such applications are available on request.

Order Codes	Description
55-22	Autosampler for use with RFM refractometers, 90-240v ~ 50-60 Hz
55-26	4 racks of 14 x 50ml sample vials
55-228	Interface cable – autosampler to PC
55-208	Interface cable – autosampler to pump
55-54	Peristaltic Pump with forward / reverse switch , 90-240v ~ 50-60 Hz
55-81	Barcode reader and power supply, 110v ~ 50-60 Hz
55-80	Barcode reader and power supply, 230v ~ 50-60 Hz
24-82	RFM300 micro flowcell
26-80	RFM800 micro flowcell
97-002	LIMSLITE PC software for autosampler control and data archiving.

Head Office

Longfield Road, Tunbridge Wells,
Kent TN2 3EY, United Kingdom
Phone: +44 (0) 1892 500400
Fax: +44 (0) 1892 543115
sales@bellinghamandstanley.co.uk

USA Office

1000 Hurricane Shoals Road, Building D,
Suite 300, Lawrenceville, GA 30043 USA
Phone: 770 822 6898
Fax: 770 822 9165
sales@bs-rfm-inc.com

Autosampler Systems may require installation, commissioning and user training by a qualified engineer at additional cost. Further information on software, autosamplers, barcode readers and flowcells may be obtained by referring to *product specific literature* and/or *Technical Bulletins* where applicable. For details, or to discuss a particular application, please contact Bellingham + Stanley or an approved distributor.

Bellingham + Stanley reserve the right to refuse to make an offer in circumstances that may not be suitable for autosampler use.

www.bellinghamandstanley.com



**Bellingham
+ Stanley**